

The background features a dense, overlapping pattern of stylized leaves in three colors: vibrant green, bright orange, and a muted blue-grey. The leaves are rendered in a flat, graphic style with no shading or texture, creating a busy, organic feel. The text is centered over this pattern.

# IMPACTING SOCIETY



GX



[renewoxford.org](https://renewoxford.org)



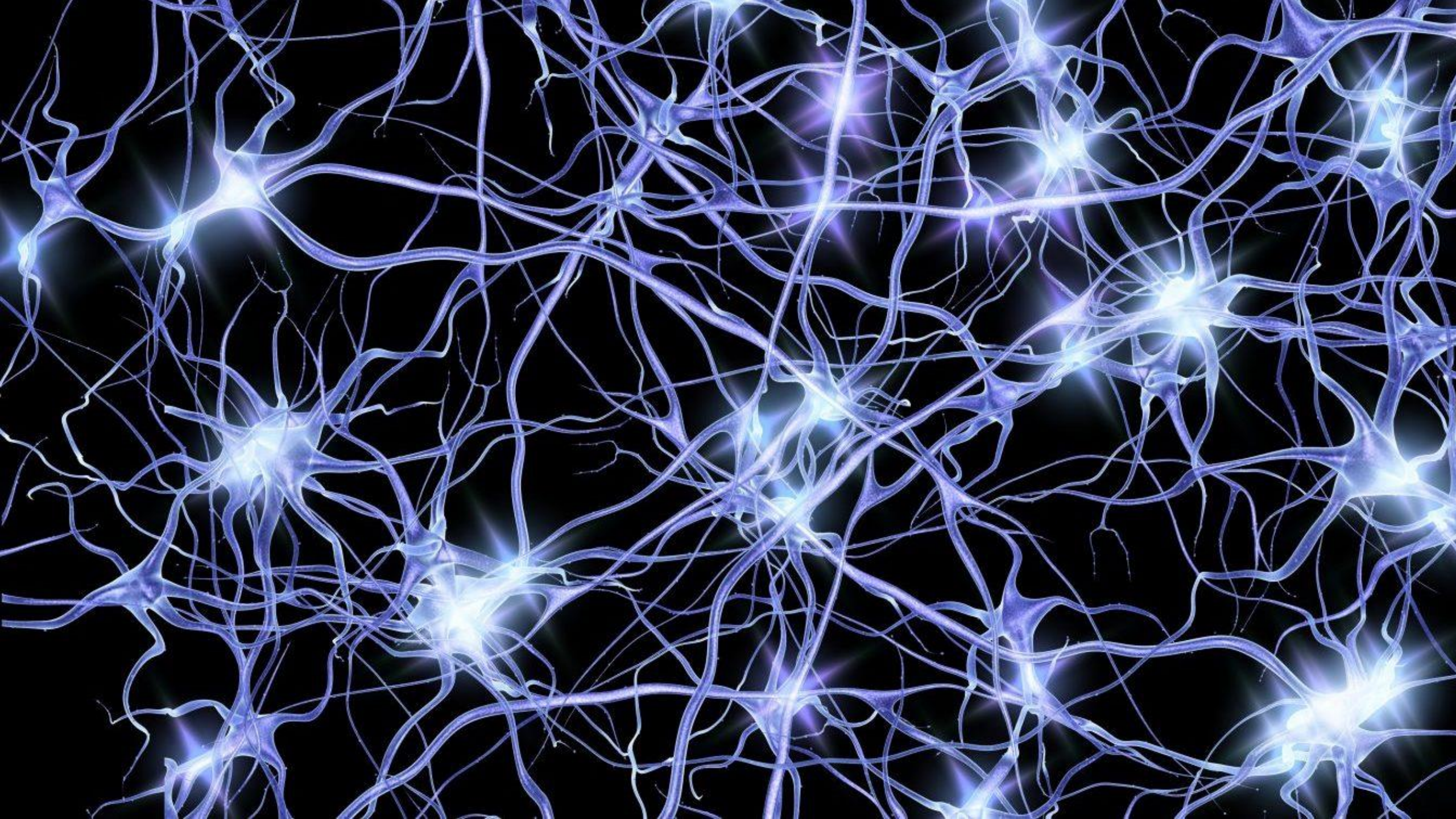
**Q:**  
**What is  
society?**



## **Rev 5:9-10**

You are worthy to take the scroll and to open its seals, because you were slain, and with your blood you purchased for God persons from every tribe and language and people and nation. You have made them to be a kingdom and priests to serve our God, and they will reign on the earth.









# Making sense of 'society'

## **1. The flow of history...**

- A 'Christian country'
- Secular humanism
- Post-modern (doubting)
- Multi-plural



# Making sense of 'society'

## **2. Mapping/Data**

- Census data (ONS)
- Local authority assessments
- Our own mapping?

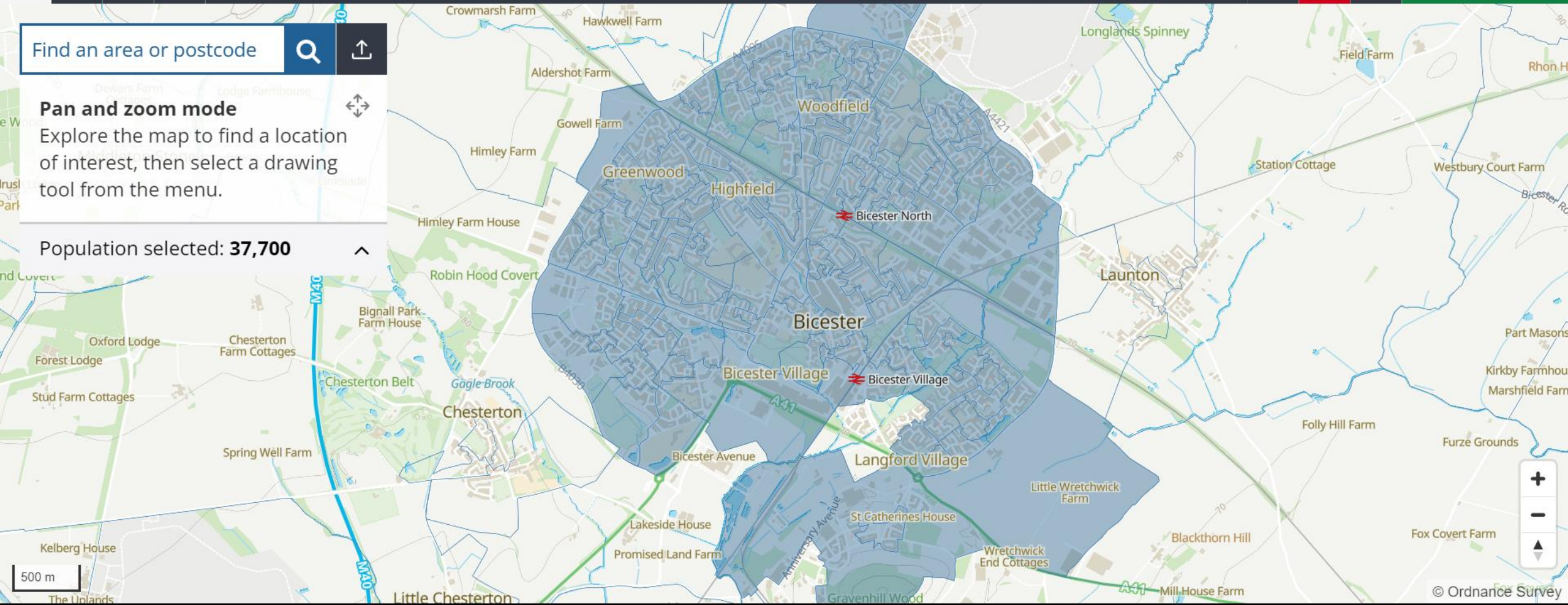
# Build a custom area profile **BETA**

Navigation icons: Pan, Draw, Erase, Clear, Undo, Redo, Build profile >

Find an area or postcode

**Pan and zoom mode**  
Explore the map to find a location of interest, then select a drawing tool from the menu.

Population selected: **37,700**



500 m





Executive summary

Population

Population groups and protected characteristics

Health conditions and causes of death

Behavioural determinants of health

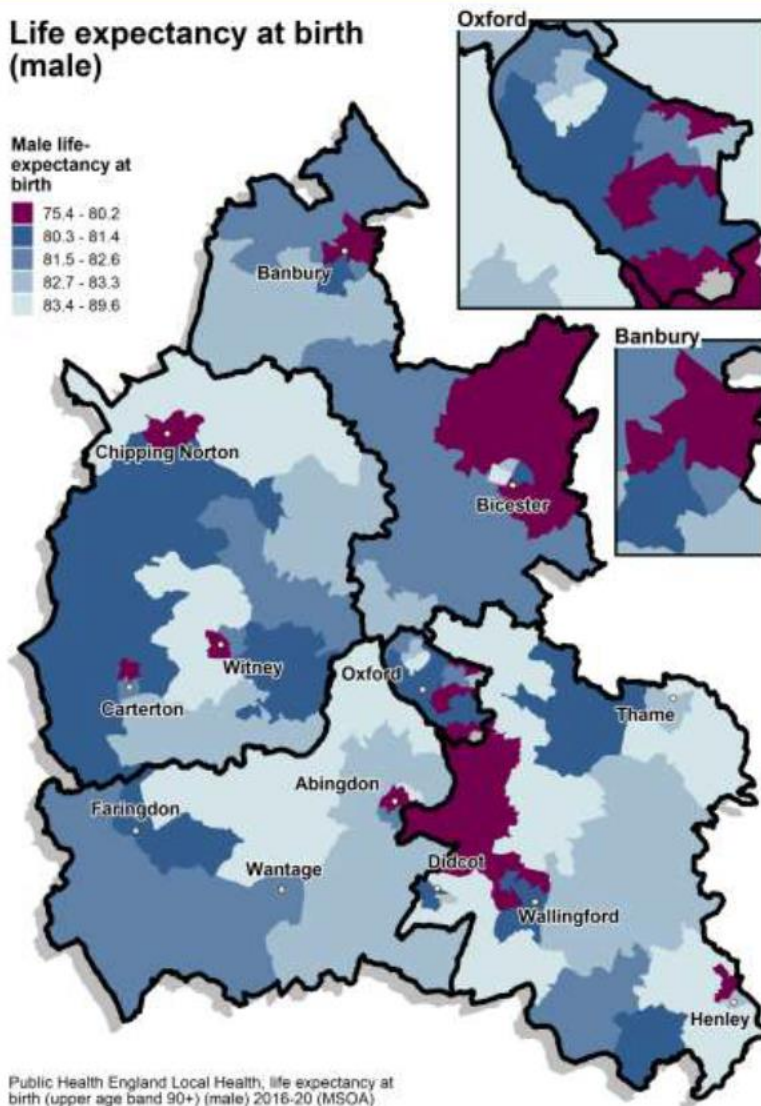
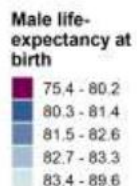
Wider determinants of health

Service Use

Local research

- [Introduction](#)
- [Summary](#)
- [Oxfordshire's location](#)
- [Oxfordshire's resident population](#)
- [Rural County](#)
- [GP registered patients](#)
- [Population by age](#)
- [Births and deaths](#)
- [Migration](#)
- [Ethnicity](#)
- [Predicted growth in population](#)
- [Life Expectancy](#)
- [Finding out more](#)

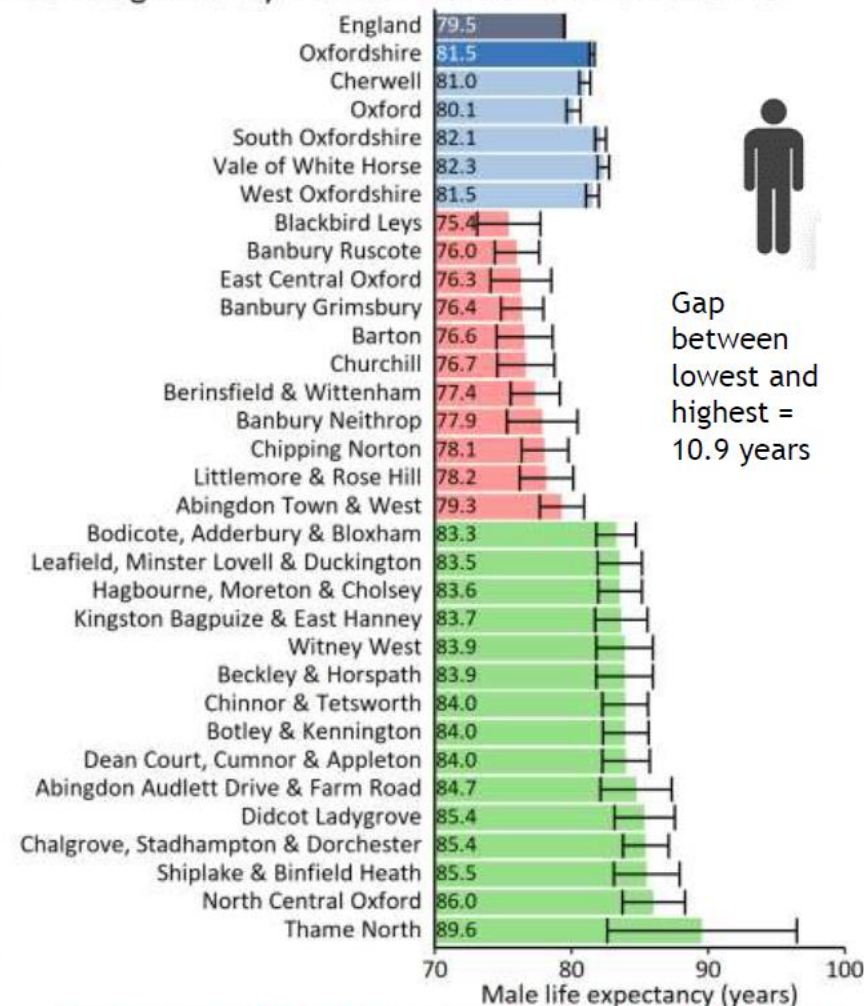
### Life expectancy at birth (male)



Public Health England Local Health, life expectancy at birth (upper age band 90+) (male) 2016-20 (MSOA)

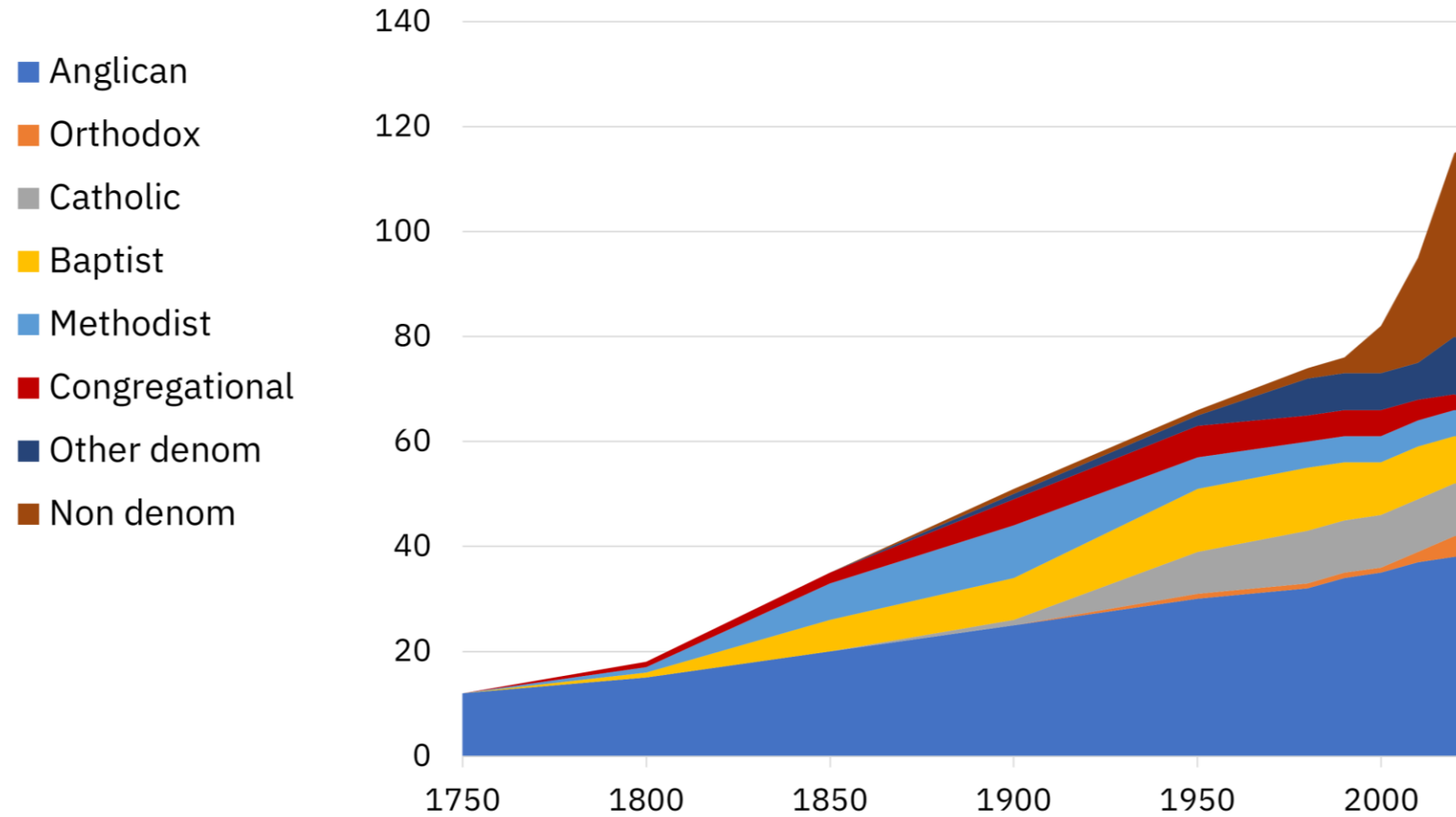
### Life expectancy at birth for males, 2016-20

MSOAs significantly worse and better than Oxfordshire



[Explore inequalities data using our interactive dashboard](#)

## Total Oxford churches, by type







# MAPPING OUR CITY

WHO DOES WHAT,  
WHERE & FOR WHOM?

**viva** RENEW OXFORD  
together for children

# WHY MAPPING?

In order to build a stronger response, there needs to be a clear picture of the issues people face in this city, and of existing responses, current collaboration and remaining gaps. This will help frame opportunities for further fruitful collaboration, highlight the greatest needs, and identify where there isn't a need for so much investment.

Whilst there are many papers on these topics, they are diverse and spread out. Mapping to combine findings from these papers and integrating them with up-to-date intelligence about the action of local churches would greatly empower all those interested in forging strategic ministry partnerships.

The publication of a successful mapping study would also raise the profile of the church in the city and open opportunities to collaborate with other service providers such as council, NHS, schools and health providers, thus ensuring that Christian initiatives serve as strategic partners in a city-wide drive for change and increase the chance for deeper change in issues that contribute to inequality and injustice.

It would also increase many Christians' confidence in offering their faith-fuelled service and distinctive voice to the city.



# HOPED-FOR OUTCOMES

**STRONGER RESPONSE TO  
TACKLE INEQUALITY**

**BETTER STEWARDSHIP OF  
CHURCH RESOURCES  
TOWARDS GREATER IMPACT**

**STRONGER CONNECTION BETWEEN  
THE CHURCH AND CITY AUTHORITIES  
AND STATUTORY BODIES TO  
CONTRIBUTE TO CITY-WIDE CHANGE**

**MORE CONFIDENT PUBLIC  
EXPRESSION OF CHRISTIAN FAITH**

**OX**



## **SOME OBSERVATIONS**

1. Society is not monolithic
2. There is growing openness from public bodies and businesses, who might relate to churches in a range of ways:
  - *All Anglican*
  - *No thanks!*
  - *Warm inclusion*
3. There are more opportunities emerging, some with substantial funding.





**Q:**  
**What do we  
mean by  
'impact'?**



**Maximum impact**

**=**

**Greatest possible  
force in the smallest  
possible space and  
time**





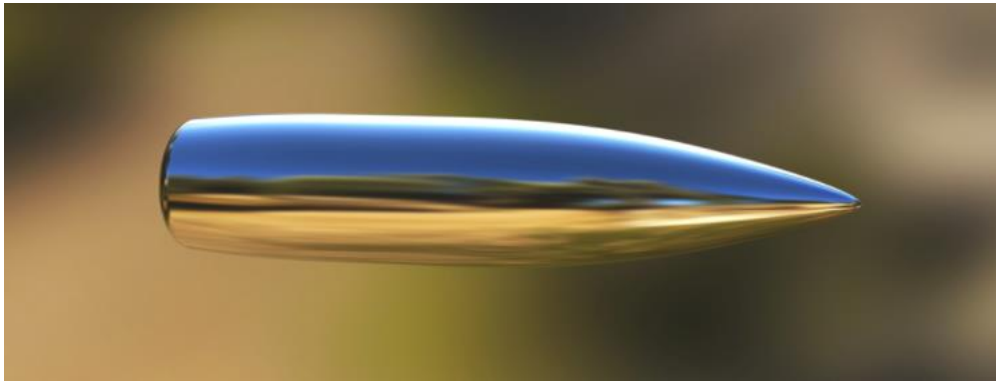
**Q:**  
**What are some  
biblical images  
of God's  
kingdom  
coming?**



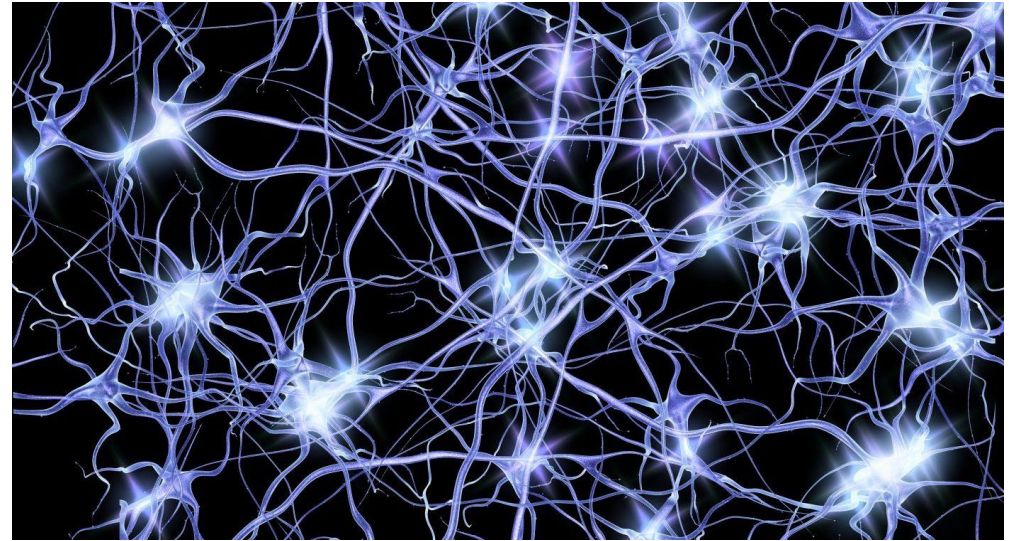
# God has a big tool-box!

- Changed individuals
- Church planting
- Small groups
- Social action to address problems
- Creative activities (business, arts, innovation)
- Lobbying for policy change
- Taking on public leadership

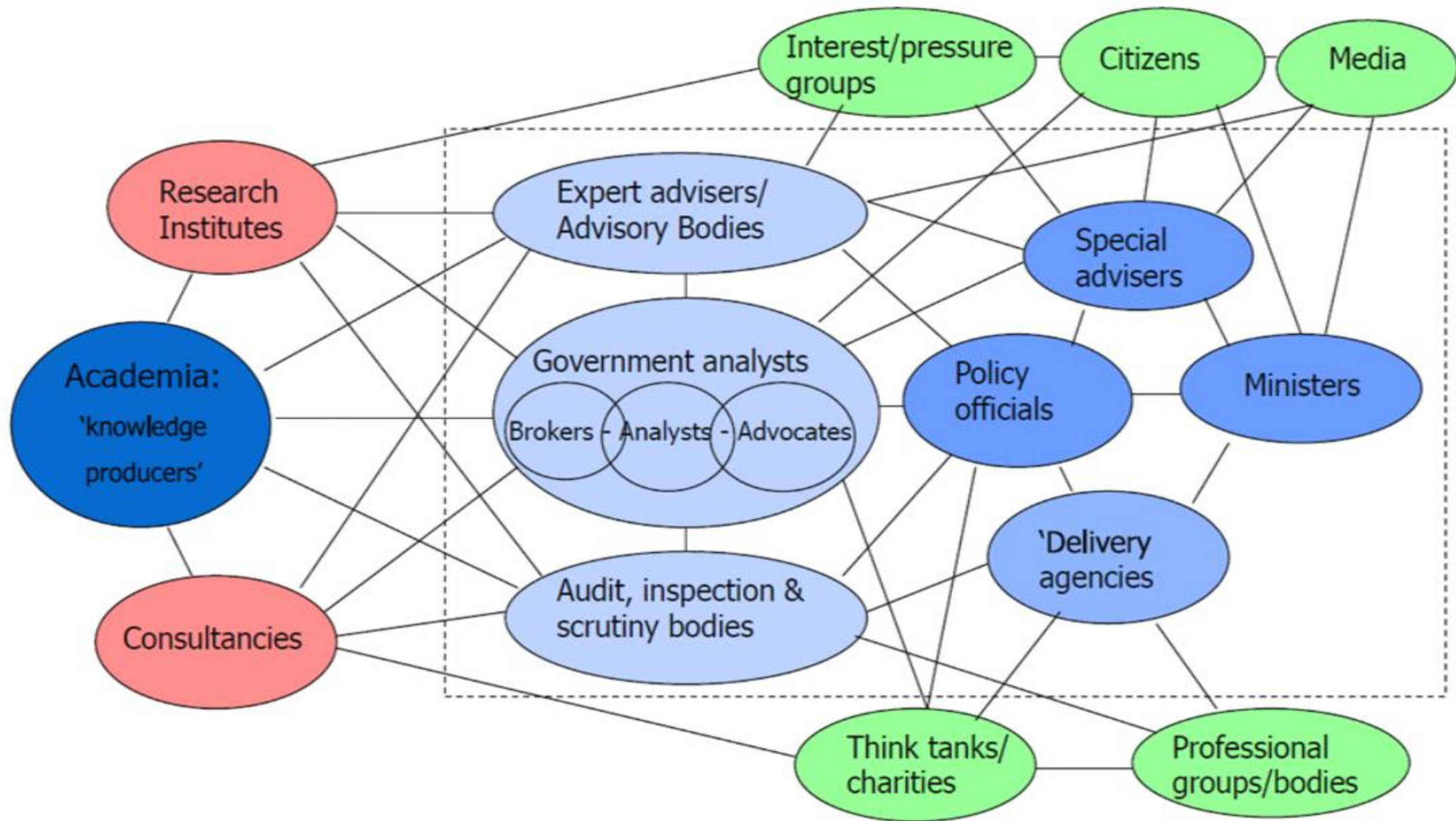




There is no 'silver bullet'



It's complex!











How can  
we  
respond?

## **1. Befriend and signpost**



**For video:  
see link on final slide**



# How can we respond?

- 1. Befriend and signpost**
- 2. Gain a clear vision**



A map of England and Wales with various cities labeled. Two red circles highlight Reading and Southampton. Two callout boxes with black borders and white backgrounds are connected to these circles by black lines. The top box is connected to Reading and lists three city themes. The bottom box is connected to Southampton and lists a general statement about the city.

**Reading 2050:**

Green Tech City

City of Rivers and Parks

City of Culture and Diversity

**Southampton:**

A good place to grow up and a good place to grow old



# How can we respond?

**1. Befriend and signpost**

**2. Gain a clear vision**

- Springboard to action
- Builds trust and relationship
- Focuses prayer



# Vision exercises

- A. Look at what God has done**
- B. Imagine God's glory**
- C. Pray for revelation**



# (A) Look at what God has done

---

2014

- A city of harmony between diverse communities
- A city where people grow and develop towards their personal potential
- A city from which people go out to do good in many places



# (B) Imagine God's glory

---

2021

More loving

More abundant

More generous

More just

More creative

More humble

More victorious



<b>More...</b>	<b>Imagine...</b>	<b>Something even greater</b>
<b>Loving</b>	spending time with a lonely neighbour	every single vulnerable child would be given a loving home
<b>Abundant</b>	the safe birth of infants	a surplus in public funds that allows our councils to restore the forward-thinking projects axed under austerity
<b>Generous</b>	giving meals to people in need	persuading businesses and colleges to give 10% of their proceeds to charity
<b>Just</b>	reducing health inequalities	addressing the darker legacies of empire
<b>Creative</b>	single art works	steering the new half-billion pound Osney Quarter towards ethical innovation
<b>Humble</b>	private prayer	a tide of corporate repentance
<b>Victorious</b>	individuals set free from debt	establishment of 'healing rooms' where prayer in Jesus' mighty name is available through the NHS



Safe Places where vulnerable individuals on the edge of Oxford can be creative + do art + find community there.

Oxford renamed for the compassion shown to the homeless.

FORMATION OF SPECIFIC TASK & FINISH GROUPS FOCUSING ON BLACK MATERNAL HEALTH, GENETIC DISORDERS AFFECTING ETHNIC MINORITIES

FOR CHURCHES IN THE CITY TO HAVE PRAYER GARDENS



# (C) Pray for revelation

---

2022

Creating new thrones

*"God is establishing new apostolic authority in key Cathedral cities - Oxford was a main one."*

(Christine Larkin, Feb 2023)





# THE BEEHIVE

...creating space to thrive...







# How can we respond?

**1. Befriend and signpost**

**2. Gain a clear vision**

- Springboard to action
- Builds trust and relationship
- Focuses prayer

**3. Form coalitions**



Christian Life Centre



Cornerstone Church



Emmanuel Church  
Oxford



Grace Church Cowley



Oxford PIWC



Oxford Vineyard



Restoration Church



Rivers of Life



Headington Baptist  
Church



Hillsong Oxford



Hope Vineyard Church



Magdalen Road Church

stALDATES

St Aldates Church



St Andrews Church



St Clement's  
Church  
OXFORD

St Clement's Church

st e66e's

St Ebbe's Church



New Life Covenant  
Church UK



Oxford Bible Church



Oxford Chinese Gospel  
Church



Oxford Community  
Church



St James Cowley



St Michael at the  
Northgate



Trinity Church Oxford



Woodstock Road  
Baptist Church





WESTON LIBRARY

BODLEIAN  
TREASURY

in Libra.

TINDALE  
COMMUNITY SCHOOL

TINDALE  
COMMUNITY SCHOOL

SPANISH



# Recommended resources

## Online

Gather Movement: <https://gathermovement.org/>

Renew Oxford: <https://renewoxford.org/>

Tam's story (Safe Families): <https://vimeo.com/545966647>

Jon Kuhrt's blog, Grace and Truth: <https://gracetruth.blog/author/jonkuhrt/>

Danny Kruger, MP: <https://www.dannykruger.org.uk/new-social-covenant>

The Bloom Review (2023): <https://www.gov.uk/government/news/government-needs-to-better-understand-faith-independent-review-claims>

## Books

Andy Crouch, *Culture Making* (on creativity for social change)

Sam Wells, *For Good* (arguing for Christians to focus on positive social change)

Hilary Cottam, *Radical Help* (secular research on role of friendship in social care)